

Heavy Duty Barrier

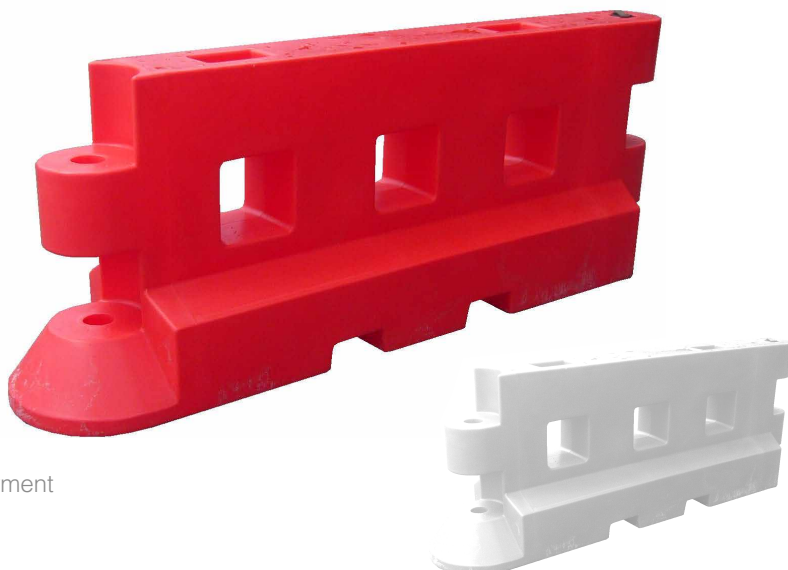
GB2

The GB2™ Barrier has a 2 metre working length and height of 900mm making it an ideal low level containment barrier, suitable for highway and site delineation. The system is fully interlocking and can be easily deployed by 2 people without the need for lifting equipment. The GB2™ has the ability to achieve up to 35° angles thanks to its pin locking device, making uneven ground and corners hassle free.

Produced in UV stabilised polyethylene the GB2™ Barrier is suitable for use in all weather conditions and once water or sand filled for added ballast, the system will provide a premium level of protection for both pedestrians and vehicles.

Features:

- One-piece durable moulded design
- Robust prime UV stabilised polyethylene
- Quick pin hinge and support plate assembly
- Fully interlocking supporting 35° bends, angles, and curves
- 2 person lift and deployment
- No heavy tooling required
- Water level indicator
- Can be water or sand filled
- Wide design with forklift slots at each base for ease of deployment
- Securely stackable for transportation & storage
- Anti-climb mesh and solid hoarding available for added security & safety



Specification

Dimensions (mm)	L2000 x H900 x D500 x W200
Max Angle	35°
Material	UV MDPE (medium density polyethylene)
Fill Capacity	318 Litre
Weight Empty / Filled	E = 32kg / F = 350kg
Link Pin	D = 76 / H = 830 / W = 0.6
Colours	Red / White
Fill / Drain Holes	F = D95mm / D = D25mm
Fork Channels	2 x 200 x 90mm
No. Per Pallet	5 (OS)
Confirmed Wind Speed	78mph

Contact your Account Manager or Customer Service on 0115 973 8088 for more information and pricing