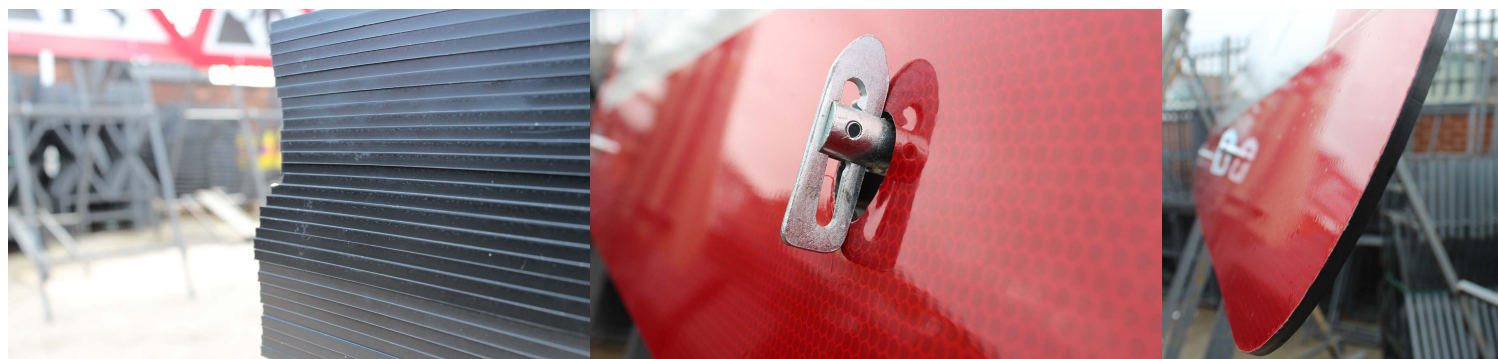


# ENVIROPLATE

100% RECYCLABLE SUBSTRATE

## the next stage in temporary traffic sign substrate evolution

Working with our substrate supply partners, **ENVIROPLATE** has been specially developed as the new standard for **HI-SPEED TEMPORARY TRAFFIC SIGNS** instantly making GRP Poly obsolete.



### Specification details & benefits

- Polypropylene - available in 4mm and 5mm thicknesses
- Dence compound blend providing inherent strength
- Able to withstand heavy impact and robust handling
- Excellent temperature stability and chemical resistance
- Low moisture permeability
- Easy and safe to cut - no glass fibre splinters
- Reduced production time
- Neater finish when engraved for personalisation and security
- 100% recyclable and manufactured from 100% re-ground materials
- No brass eyelets required
- Snug fit toggle holes - no rattle

100%  
RECYCLABLE SUBSTRATE



Contact your Account Manager or Customer Service on 0115 973 8088 for more information and pricing

# ENVIRO<sup>♻️</sup>PLATE

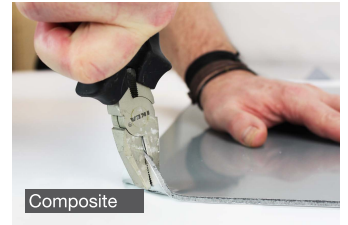
100% RECYCLABLE SUBSTRATE

your best substrate option for **HI-SPEED TEMPORARY TRAFFIC SIGNS**

Why is **ENVIRO<sup>♻️</sup>PLATE** better than GRP Poly and Composite?

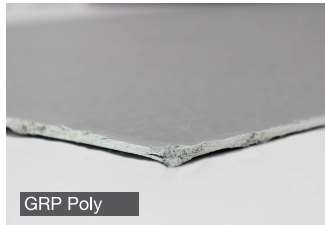
## 1) STRENGTH

**ENVIRO<sup>♻️</sup>PLATE** significantly outperforms both GRP and Composite for strength and flexibility.



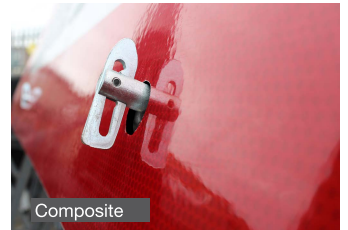
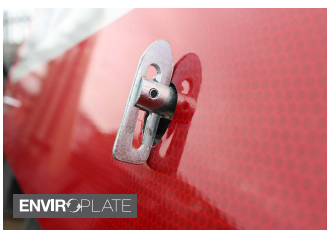
## 2) CLEAN CUTTING

**ENVIRO<sup>♻️</sup>PLATE** dense compound blend produces clean edges when cut, drilled or engraved with no resulting fibre splinters or shavings.



## 3) SNUG FIT TOGGLE HOLES

Both GRP Poly and Composite are 3mm thick materials. At 5mm, **ENVIRO<sup>♻️</sup>PLATE** fits more securely on Quick-Fit toggle fixings, reducing plate rattle to a minimum.



## 4) EXCELLENT TEMPERATURE STABILITY

Subjected to shock cycle hot and cold tests between 80° and -40°, **ENVIRO<sup>♻️</sup>PLATE** showed no evidence of warping or bubbling.

