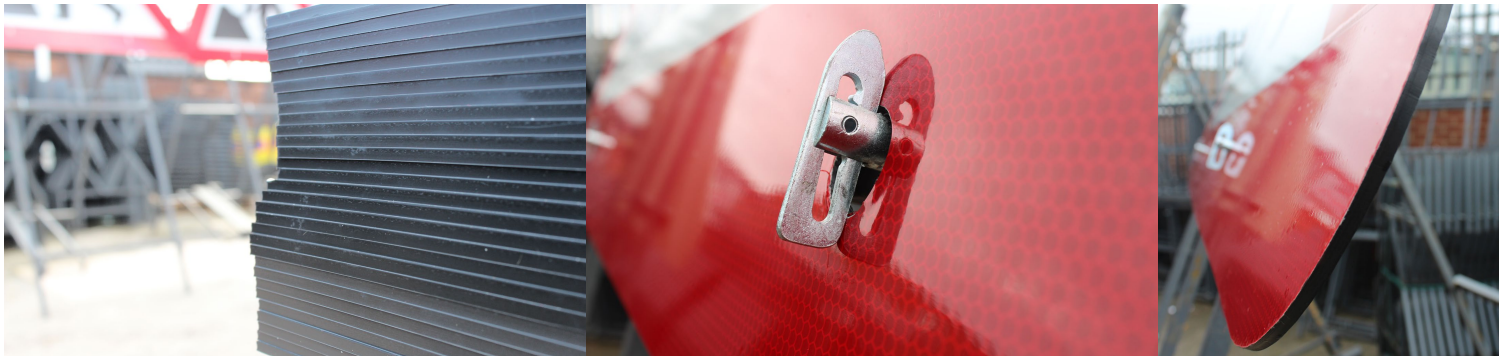


ENVIROPLATE

100% RECYCLABLE SUBSTRATE

the next stage in temporary traffic sign substrate evolution

Working with our substrate supply partners, **ENVIROPLATE** has been specially developed as the new standard for **HI-SPEED TEMPORARY TRAFFIC SIGNS** instantly making GRP Poly obsolete.



Specification details & benefits

- 5mm thick Polypropylene Copolymer
- Dence compound blend providing inherent strength
- Able to withstand heavy impact and robust handling
- Excellent temperature stability and chemical resistance
- Low moisture permeability
- Easy and safe to cut - no glass fibre splinters
- Reduced production time
- Neater finish when engraved for personalisation and security
- 100% recyclable and manufactured from 100% re-ground materials
- No brass eyelets required
- Snug fit toggle holes - no rattle

100%
RECYCLABLE SUBSTRATE



Contact your Regional Sales Manager or Customer Services for prices and more information

☎ 0115 973 8088 ✉ tmsales@tennantsuk.com 🔗 www.tennantsuk.com 🏠 tennantstraffic.com

🐦 @TennantsUK

📺 TennantsUKLtd

📺 youtube.com/Tennantsuk

ENVIRO^{♻️}PLATE

100% RECYCLABLE SUBSTRATE

your best substrate option for **HI-SPEED TEMPORARY TRAFFIC SIGNS**

Why is **ENVIRO^{♻️}PLATE** better than GRP Poly and Composite?

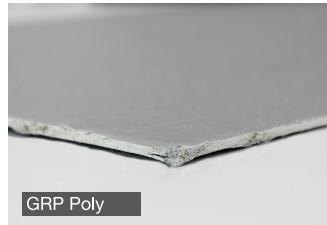
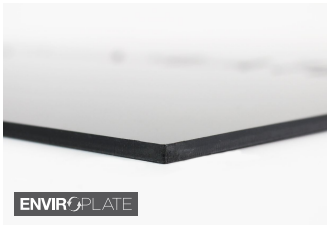
1) STRENGTH

ENVIRO^{♻️}PLATE significantly outperforms both GRP and Composite for strength and flexibility.



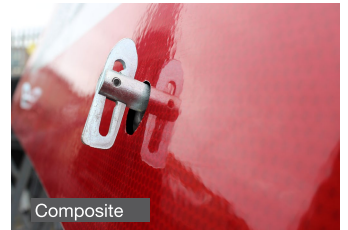
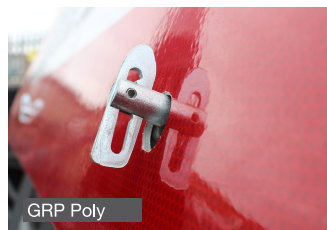
2) CLEAN CUTTING

ENVIRO^{♻️}PLATE dense compound blend produces clean edges when cut, drilled or engraved with no resulting fibre splinters or shavings.



3) SNUG FIT TOGGLE HOLES

Both GRP Poly and Composite are 3mm thick materials. At 5mm, **ENVIRO^{♻️}PLATE** fits more securely on Quick-Fit toggle fixings, reducing plate rattle to a minimum.



4) EXCELLENT TEMPERATURE STABILITY

Subjected to shock cycle hot and cold tests between 80° and -40°, **ENVIRO^{♻️}PLATE** showed no evidence of warping or bubbling.

